

Indesit Company is one of the European leading manufactures and distributors of major domestic appliances (washing machines, dryers, dishwashers, fridges, freezers, cookers, hoods, ovens and hobs). It is the undisputed leader in major markets such as Italy, the UK and Russia. Founded in 1975 and listed on the Milan Stock Exchange since 1987, the Group posted sales of approximately euro 2.9 billion in 2010. Indesit Company has 14 production facilities (in Italy, Poland, the UK, Russia and Turkey) and 16,000 employees. The Group's main brands are Indesit, Hotpoint and Scholtès.

Company Profile

COMPANY

INDESIT COMPANY

Viale A. Merloni, 47

60044 FABRIANO

Tel.: +390732/6611

Fax: +390732 662206

http://www.indesitcompany.com



Auditing company *

KPMG



Investor relations *

Elisabetta Villizzi

E-mail: investor.relations@ indesit.com

Tel.: +3902300831 - Fax: +390230083271

ISIN IT0000076197

BLOOMBERG IND IM

REUTERS IND.MI

Industry
CONSUMER GOODS

Super sector
PERSONAL & HOUSEHOLD GOODS



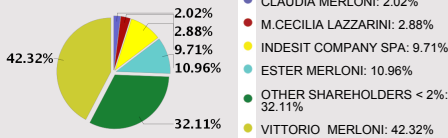
CORPORATE GOVERNANCE * (CG)

Executive / Non executive / Independent	BOARD MEMBERS	C.C.I.(1)	C.R.(2)	BOARD MEMBERS OWNERSHIP
•	Andrea Merloni Chairman			Antonella Merloni 276,030 shares on 12/31/10
•	Marco Milani Chief Executive Officer			Aristide Merloni 275,840 shares on 12/31/10
•	Valerio Battista Board member			Andrea Merloni 265,840 shares on 12/31/10
•	Francesco Caio Board member			Maria Paola Merloni 239,900 shares on 12/31/10
•	Innocenzo Cipolletta Board member			Marco Milani 100,000 shares on 12/31/10
•	Paolo De Cesare Board member			
•	Mario Greco Board member			
•	Antonella Merloni Board member			
•	Aristide Merloni Board member			
•	Maria Paola Merloni Board member			
•	Paolo Monferino Board member			
				TOP MANAGEMENT
				Marco Milani Chief Executive Officer
				Massimo Rosini Chief Technical Officer
				Andrea Crenna Chief Financial Officer
				Enrico Vita Chief Commercial Officer
				Francesco Trovato Chief Marketing Officer
				Marco Marini Chief Supply Chain & IT Officer
				OTHER INFORMATION RELATING GOVERNANCE
				List based voting system (BoD / MB) <input checked="" type="checkbox"/>
				Quorum for minority shareholders 2.0%
				The Company adopted the Code of Self discipline of Listed Company, the Code of Conduct (Internal Dealing) and the Principles of Conduct for operations with correlated parties. A Human Resources Committee was set up.

(1): Internal Control Committee (2): Compensation Committee (3): Nomination Committee

(CG) Corporate Governance: Traditional Model

SHAREHOLDERS *



Source: Indesit Company Update: 31/08/2011

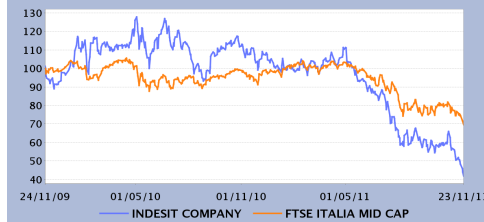
KEY FIGURES *

€m	9 Months		Var %	Annual Results	
	30/09/11	30/09/10	'11 vs '10	31/12/10	31/12/09
Total Sales	2,084.40	2,068.30	0.78%	2,879.20	2,613.00
Ebitda	182.60	215.40	-15.23%	309.80	259.50
Ebitda margin	8.76%	10.41%		10.76%	9.93%
Ebit	100.70	130.80	-23.01%	183.80	118.60
Ebit Margin	4.83%	6.32%		6.38%	4.54%
Ebt	76.00	102.80	-26.07%	149.40	66.80
Ebt margin	3.65%	4.97%		5.19%	2.56%
Net Result	47.00	67.80	-30.68%	89.70	34.50
E-Margin	2.26%	3.28%		3.12%	1.32%

	9 Months		Var %	Annual Results	
	30/09/11	30/09/10	'11 vs '10	31/12/10	31/12/09
Net Financial Debt / (Cash)	467.20	352.40	32.58%	178.90	290.20
Net Equity	52.40	547.30	-90.43%	572.80	468.10
Capital Employed	519.60	899.70	-42.25%	751.70	758.30

Source: company data. The year-end closing is at December, 31. Instead of the Net financial position, it is indicated the net financial indebtedness (balance of current financial assets, cash and cash equivalent, payables to banks and other financial payables, medium-long term financial payables and other non-current financial assets)

SHARE ANALYSIS



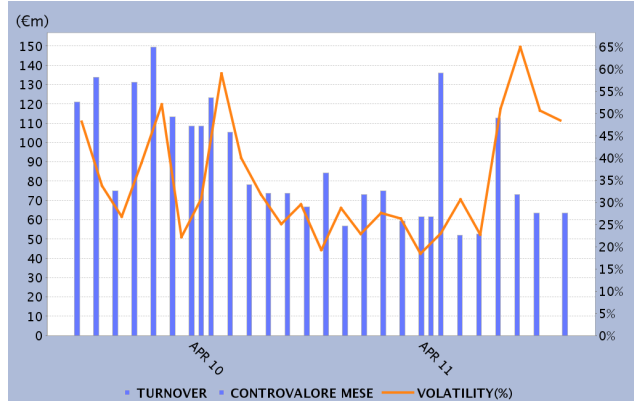
	Quantity	Capitalis. (€ m)
Number of shares outstanding	114,176,966	387.58
Ordinary	113,665,684	385.38
Shares Not Conv	511,282	2.20
Nominal value (€)		0.90

	Last Divid. (€)	Detach Date
Ordinary	0.300	23/05/2011
Shares Not Conv	0.318	23/05/2011

Last price	Ord	NotConv	Performance	Ord	NotConv	INDEX ITMC	Relative perf.	
23/11/2011	3.39	4.30	-2Y	-59.01%	-45.36%	-2Y	-31.00%	-28.01%
Price range (-2y)	Ord	NotConv	-1Y	-61.68%	-37.02%	-1Y	-25.18%	-36.49%
MAX	10.30	8.49	-3M	-29.44%	-13.06%	-3M	-10.17%	-19.27%
MIN	3.39	4.30	-1M	-28.57%	-5.35%	-1M	-12.91%	-15.66%

TURNOVER AND VOLATILITY - STATISTICS FROM 03/01/2011 TO 23/11/2011

Turn over	
Total(€)	821,344,750
Daily average(€)	3,571,064
Number of shares traded	
Total	130,888,370
Daily average	569,080
Number of trades	
Total	226,463
Daily average	985
Volatility	40.30%
Turnover velocity	128.17%



Source: Borsa Italiana. Data refer to the ordinary shares.

OTHER LISTED INSTRUMENTS ON BIT MARKET

IDEM STOCK FUTURES SECURITISED DERIVATIVES WARRANTS STOCK OPTIONS LISTED BONDS

ANALYST REPORTS

Analyst reports from www.borsaitaliana.it: Merrill Lynch (03/08/2011) Merrill Lynch (28/07/2011) AXIA (21/07/2011) AXIA (09/05/2011) Merrill Lynch (06/05/2011)

* The above information has been provided and updated by the issuing company